

21st January
2022

Safer Communities Partnership Board

Performance Dashboard – Up To November 2021

Data Collection

The data from this report is collected from the following sources:

Crime Data:

<https://www.met.police.uk/sd/stats-and-data/met/crime-data-dashboard/>

Special Crime Data:

<https://www.met.police.uk/sd/stats-and-data/met/hate-crime-dashboard/>

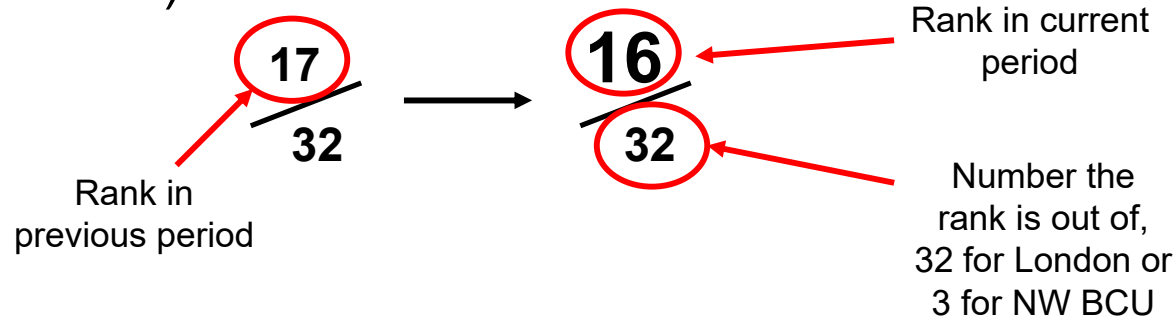
ASB Data:

<https://www.london.gov.uk/what-we-do/mayors-office-policing-and-crime-mopac/data-and-statistics/crime-dashboard>

Repeat ASB Data is gathered from the Metropolitan Police on request.

Notes Before We Start

- The lower the ranking the better Barnet is doing when compared with other boroughs across London on in the North West Borough Command Unit (NW BCU).



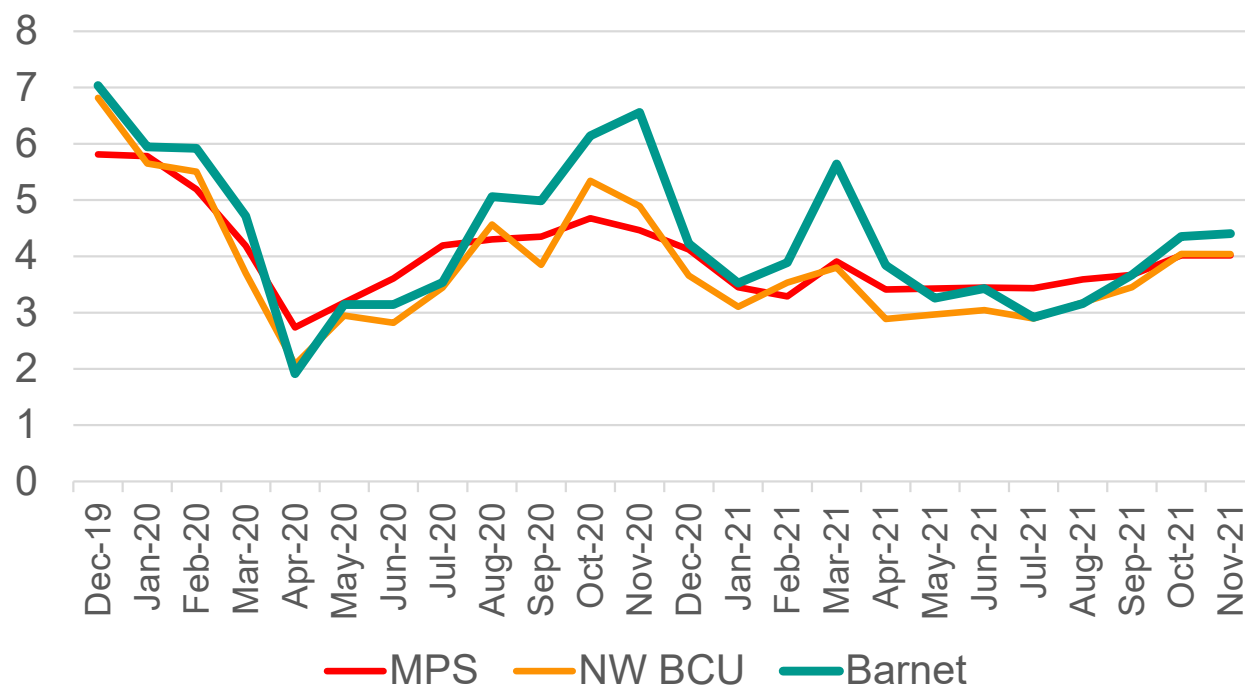
- Knife crime has previously been reported on as under 25s and non-DV only, this report will note all knife crime with injury which will give a higher number than previous.

Burglary - Residential

In the 3 months of September to November 2021 there were **511** cases of residential burglary in Barnet

Trend

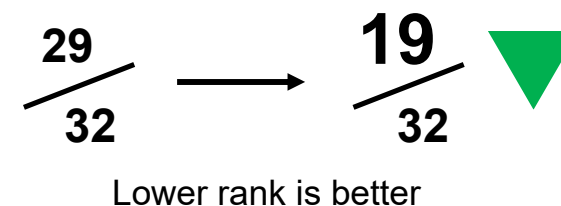
Residential Burglary per 1,000 Population



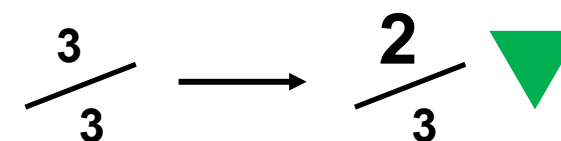
There were **1903** cases of residential burglary in Barnet in the 12 months up to November 2021. In the 12 months prior there were **2362**. This is a decrease of **19.4%**

3 Month Performance

MPS Comparison (3 Month Period) change from same period last year.



NW BCU Comparison (3 Month Period) change from same period last year.



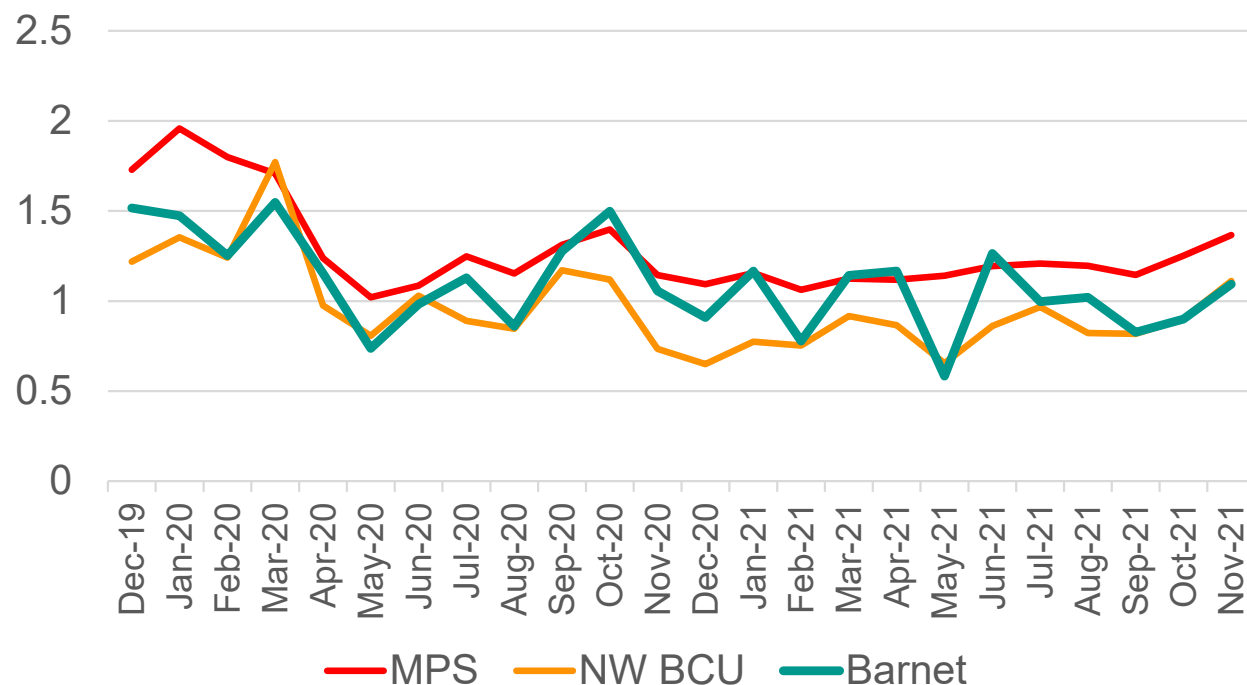
There were **511** cases of residential burglary in the 3 months of September to November 2021. In the same period 12 months prior there were **720**. This is a decrease of **29.0%**

Burglary - Commercial

In the 3 months of September to November 2021 there were **116** cases of commercial burglary in Barnet

Trend

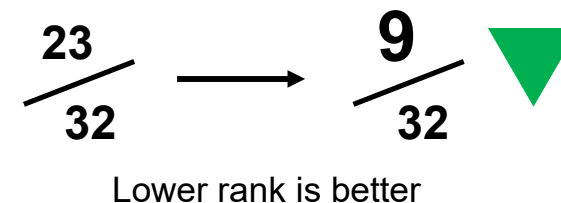
Commercial Burglary per 1,000 Population



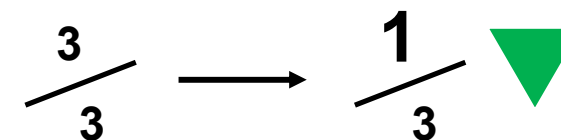
There were **487** cases of commercial burglary in Barnet in the 12 months up to November 2021. In the 12 months prior there were **589**. This is a decrease of **17.3%**

3 Month Performance

MPS Comparison (3 Month Period) change from same period last year.



NW BCU Comparison (3 Month Period) change from same period last year.



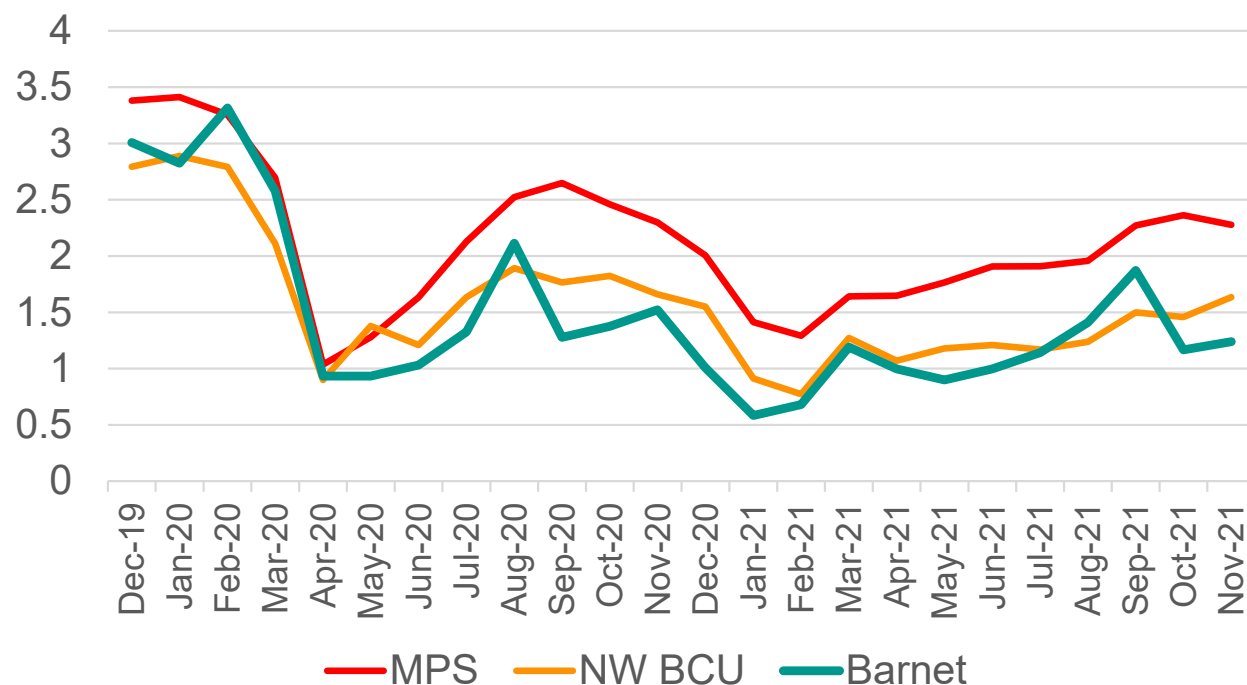
There were **119** cases of commercial burglary in the 3 months of September to November 2021. In the same period 12 months prior there were **156**. This is a decrease of **25.6%**

Robbery - Personal Property

In the 3 months of September to November 2021 there were **176** cases of personal robbery in Barnet

Trend

Robbery (Personal) per 1,000 Population



There were **542** cases of personal robbery in Barnet in the 12 months up to November 2021. In the 12 months prior there were **904**. This is a decrease of **40.0%**

3 Month Performance

MPS Comparison (3 Month Period) change from same period last year.

$$\frac{7}{32} \longrightarrow \frac{12}{32} \blacktriangle$$

Lower rank is better

NW BCU Comparison (3 Month Period) change from same period last year.

$$\frac{1}{3} \longrightarrow \frac{2}{3} \blacktriangle$$

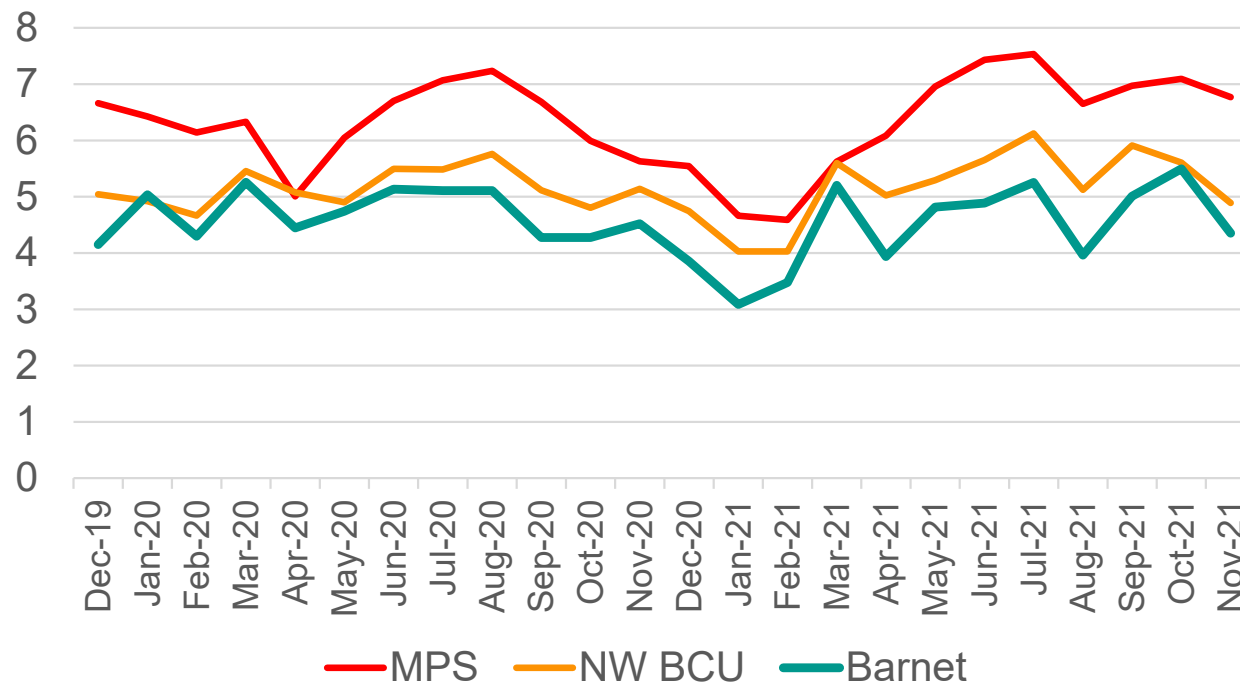
There were **176** cases of personal robbery in the 3 months of September to November 2021. In the same period 12 months prior there were **170**. This is an increase of **3.5%**

Violence with Injury

In the 3 months of September to November 2021 there were **611** cases of violence with injury in Barnet

Trend

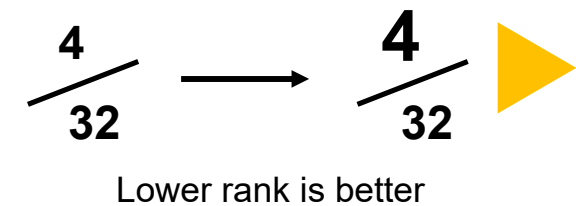
Violence with Injury per 1,000 Population



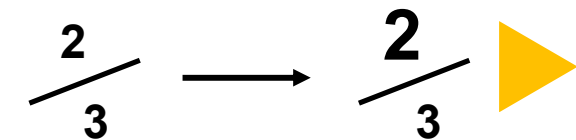
There were **2192** cases of violence with injury in Barnet in the 12 months up to November 2021. In the 12 months prior there were **2292**. This is a decrease of **4.4%**

3 Month Performance

MPS Comparison (3 Month Period) change from same period last year.



NW BCU Comparison (3 Month Period) change from same period last year.



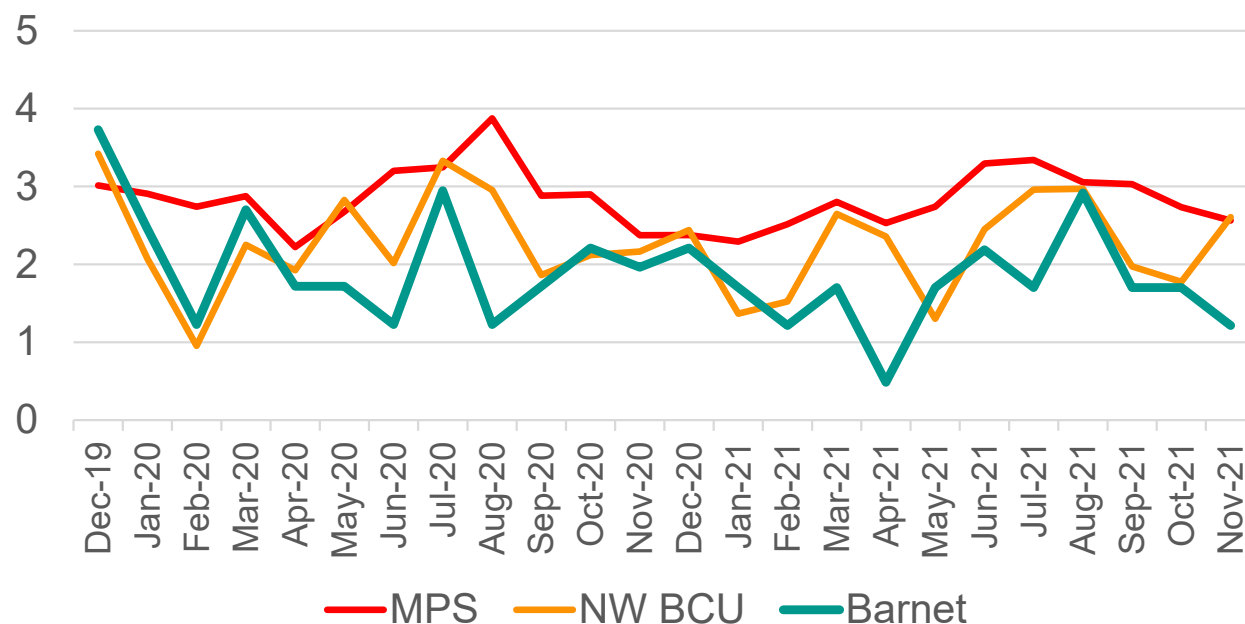
There were **611** cases of violence with injury in the 3 months of September to November 2021. In the same period 12 months prior there were **532**. This is an increase of **14.8%**

Knife Crime With Injury

In the 3 months of September to November 2021 there were **19** cases of knife crime with injury in Barnet

Trend

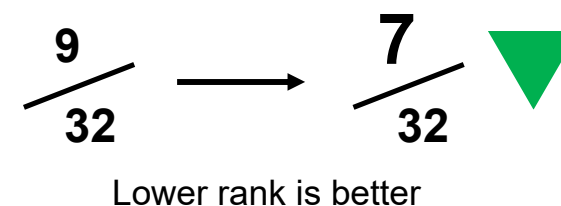
Knife Crime with Injury per 1,000 Population



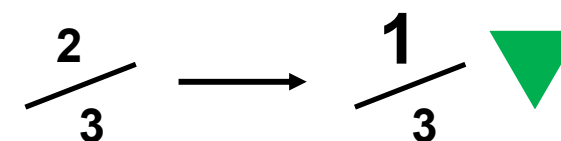
There were **84** cases of knife crime with injury in Barnet in the 12 months up to November 2021. In the 12 months prior there were **101**. This is a decrease of **16.8%**

3 Month Performance

MPS Comparison (3 Month Period) change from same period last year.



NW BCU Comparison (3 Month Period) change from same period last year.



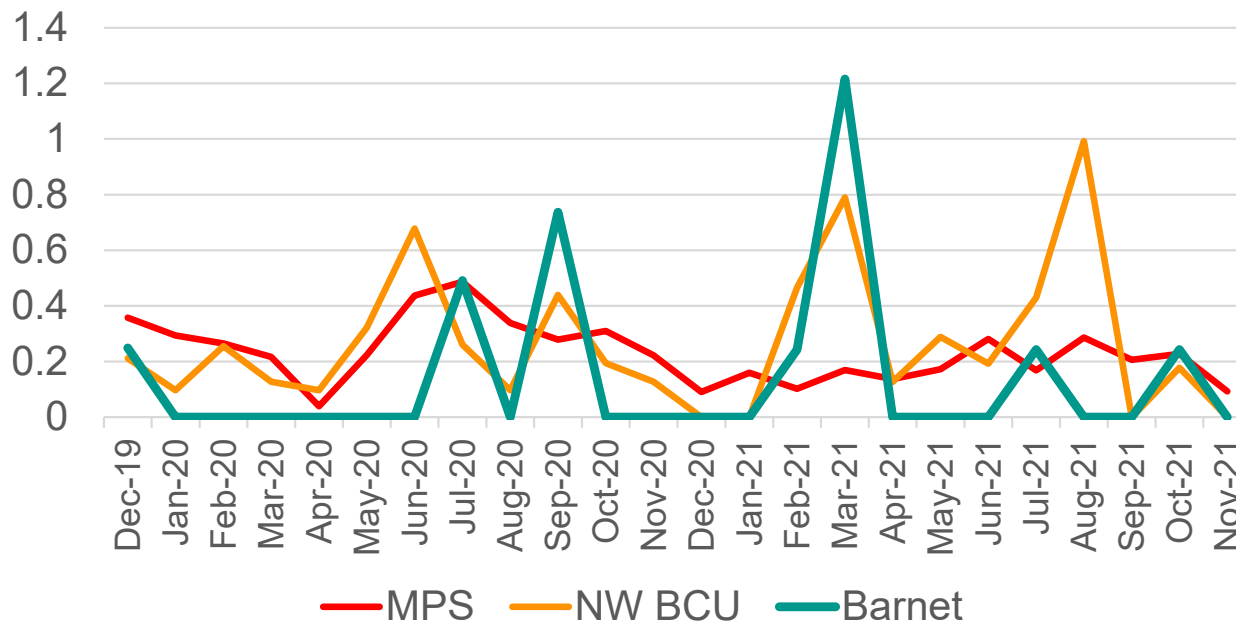
There were **19** cases of knife crime with injury in the 3 months of September to November 2021. In the same period 12 months prior there were **24**. This is a decrease of **20.8%**

Gun Crime Lethal Barrelled Discharged

In the 3 months of September to November 2021 there was 1 case of gun crime lethal barrelled discharged in Barnet

Trend

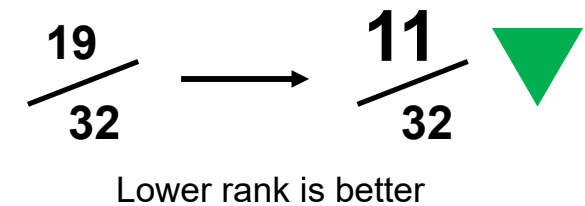
Gun Crime Lethal Barrelled Discharged per 1,000 Population



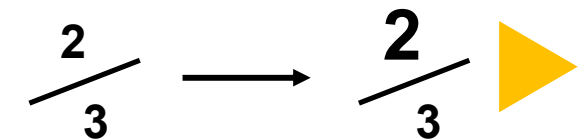
There were **8** cases of gun crime lethal barrelled discharged in Barnet in the 12 months up to November 2021. In the 12 months prior there were **6**. This is an increase of **33.3%**

3 Month Performance

MPS Comparison (3 Month Period) change from same period last year.



NW BCU Comparison (3 Month Period) change from same period last year.



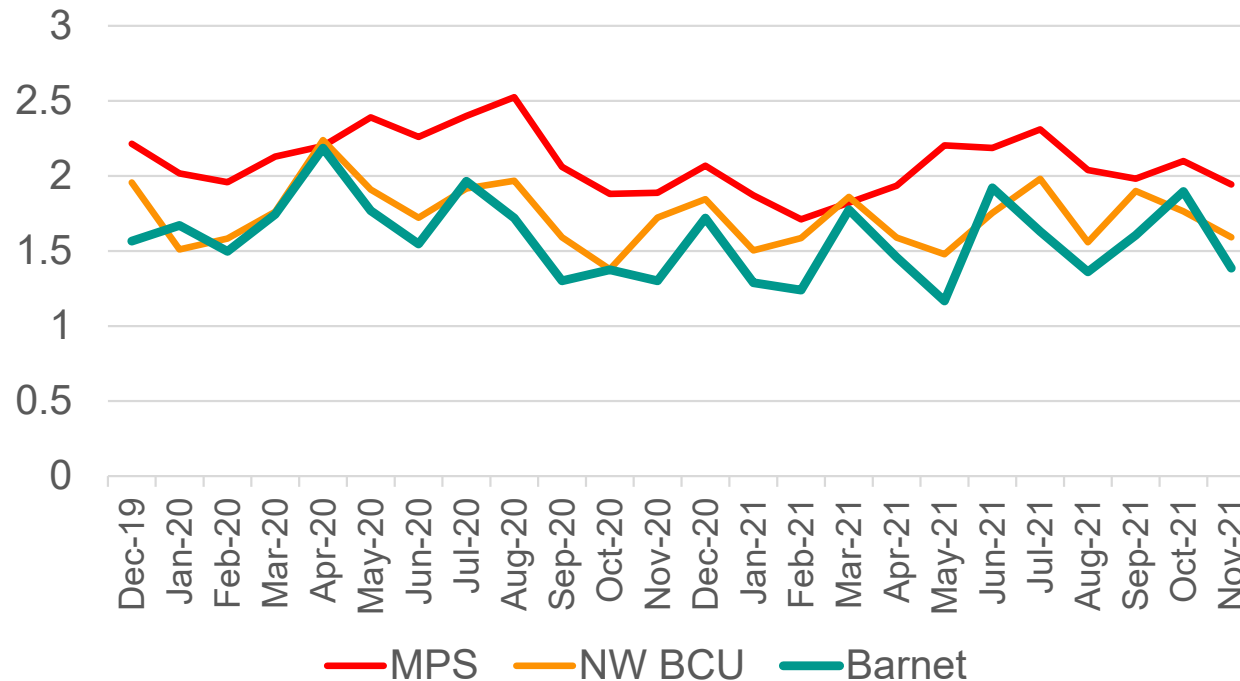
There was **1** case of gun crime lethal barrelled discharged in the 3 months of September to November 2021. In the same period 12 months prior there were **3**. This is a decrease of **66.7%**

Domestic Abuse VWI

In the 3 months of September to November 2021 there were **201** cases of domestic abuse VWI in Barnet

Trend

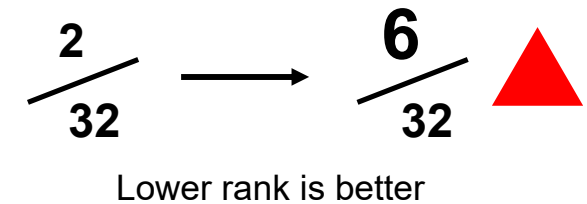
Domestic Abuse VWI per 1,000 Population



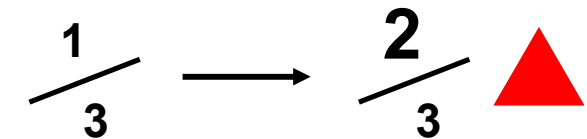
There were **758** cases of domestic abuse VWI in Barnet in the 12 months up to November 2021. In the 12 months prior there were **799**. This is a decrease of **5.1%**

3 Month Performance

MPS Comparison (3 Month Period) change from same period last year.



NW BCU Comparison (3 Month Period) change from same period last year.



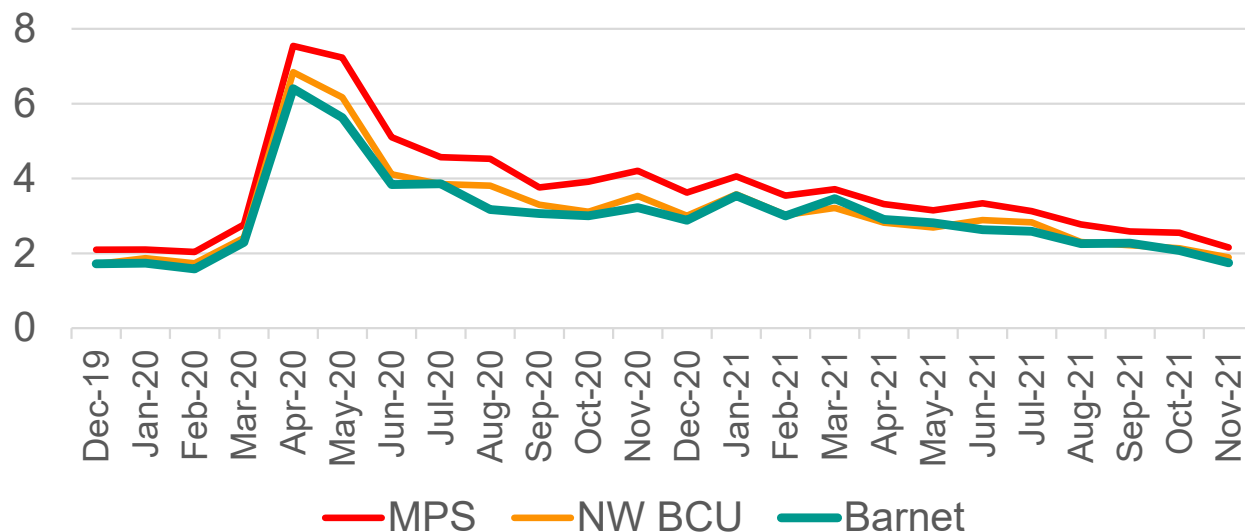
There were **201** cases of domestic abuse VWI in the 3 months of September to November 2021. In the same period 12 months prior there were **162**. This is an increase of **24.1%**

Anti-Social Behaviour Calls

In the 3 months of September to November 2021 there were **2508** calls regarding ASB in Barnet

Trend

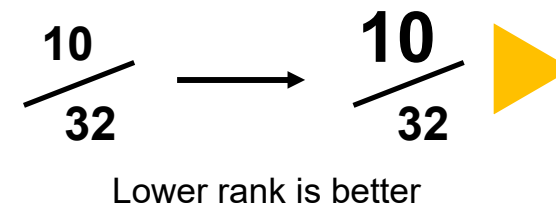
ASB Calls per 1,000 Population



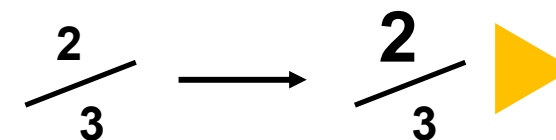
There were **13,222** calls regarding ASB in Barnet in the 12 months up to November 2021. In the 12 months prior there were **16,062**. This is a decrease of **17.8%**

3 Month Performance

MPS Comparison (3 Month Period) change from same period last year.



NW BCU Comparison (3 Month Period) change from same period last year.



There were **2508** calls regarding ASB in the 3 months of September to November 2021. In the same period 12 months prior there were **3782**. This is a decrease of **33.7%**